

Juventa Mews
Malahide, Co.Dublin



Project

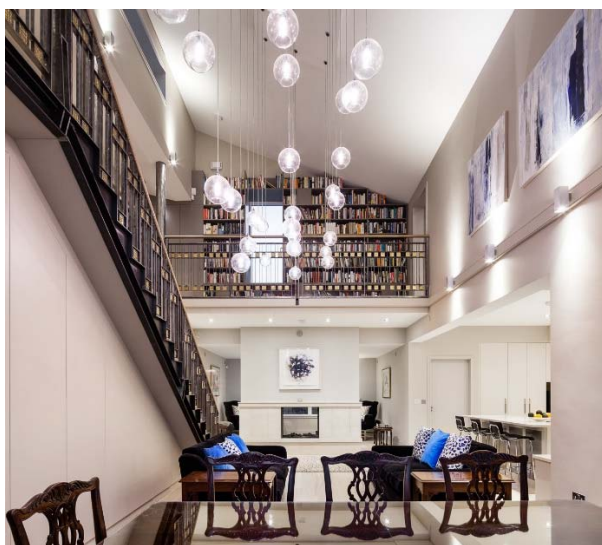
Building type:	Mews House
Completed:	2013
Number of units:	1
Developer/ Builder:	DP Builders
Architect:	Darragh Lynch Architects
Installer:	DP Builders

Dwelling Ventilation

Air inlets:	EHT969 Kit EHT Acoustic KIT: EHT Humidity Sensitive Wall Air Inlet + Canopy with Insect Grille + Plastic Wall Sleeve + 2 Acoustic Foams Ø100
Exhaust units:	BXC273 Humidity Sensitive Extract Unit 12-70 m³/h, Ø125 BXC275 Humidity Sensitive delayed PIR Extract Unit 12-70/70 m³/h, Boost via Motion Sensor, Ø125 BXC299 Delayed PIR Extract Unit 12/70 m³/h, Boost through Motion Sensor, Ø125
Fans:	V4A V4A Premium - Central Acoustic Fan for 3/4 Wet Rooms maintaining constant pressure



Juventa Mews is a 4 bedroom house.



Wall-mounted humidity sensitive air inlets were used in the living rooms and bedrooms.

This is a 4-bedroom mews house built in the back garden of a protected structure. The construction is a 400mm cavity wall with blown full fill insulation and low conductivity wall ties. The systems in the house include a combi-gas condensation boiler, a flat panel solar thermal panel and a PV panel as well as an Aereco DCV system. Care has been taken to achieve an air tightness of 1.6m³@50pa and an A3 energy rating.

Demand controlled exhaust units were used in the bathrooms, Kitchen and Utility rooms. They provide the right amount of exhaust ventilation and are connected to 2 No. V4A fans.